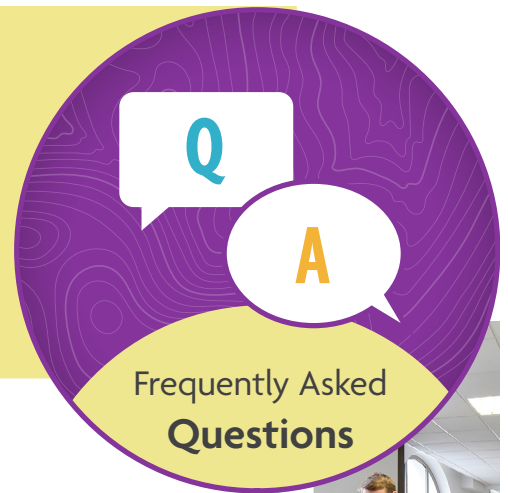


Community Transition Services Program

This document is intended to provide answers to some of the frequently asked questions of **Juvenile Rehabilitation (JR) youth**.



Q

WHAT IS COMMUNITY TRANSITION SERVICES (CTS)?

A

CTS provides a least restrictive option to residential confinement for eligible JR young people. CTS offers you therapeutic supports and connections to services along with electronic monitoring in the community while you are finishing your sentence in your home. It provides you with opportunities to enhance your independent living skills, establish housing, obtain your own transportation, and build credit, helping you prepare for a successful reentry and future.



Q

HOW DOES CTS ALIGN WITH DCYF'S EQUITY AND SOCIAL JUSTICE FOCUS?

A

JR prioritizes identifying and building community capacity using DCYF's strategic priority of eliminating racial disproportionalities and advancing racial equity. JR will identify community providers who reflect the young people being served with regard to race, ethnicity, sexual orientation, and gender expression.

Using a new needs assessment and involving youth, family, and community in the development of the CTS program will create joint ownership and an opportunity to provide the right services to the right young people at the right time in a way that matches their needs and reentry goals.



Q

HOW LONG CAN I BE ON CTS?

A

If eligible, you can be on CTS for up to the last 18 months of your sentence.



Washington State Department of
CHILDREN, YOUTH & FAMILIES



Q

CAN I LIVE ON MY OWN WHILE PARTICIPATING IN CTS?

A

If you are over 18 or emancipated, you can choose where you would like to live while participating in CTS.

Q

WHAT KIND OF SERVICES ARE PROVIDED TO ME WHILE I AM PARTICIPATING IN CTS?

A

Services offered depend on your goals and what you need. Services may include:

- Housing support.
 - Connections to education, vocation, and work training.
 - Referrals for mental health or substance use treatment.
 - Family counseling.
 - Treatment for sex offenses.
 - Independent living skills.
 - Referrals for other community-based services.
-

Q

WHEN WILL CTS BE AVAILABLE?

A

CTS will be available six months after JR implements the new risk and needs assessment – the Integrated Developmental Evaluation and Assessment (IDEA). JR plans to launch CTS May 1, 2024.

Q

HOW MUCH TIME WILL I HAVE TO PREPARE FOR CTS IF I AM ABLE TO PARTICIPATE?

A

Initial screening and review for potential CTS eligibility will begin 90-120 days prior to your anticipated eligibility date. If accepted, you will receive final confirmation 30-45 days prior to your CTS transfer date.

Q

HOW MANY CTS SPOTS ARE AVAILABLE?

A

JR plans to phase in the CTS program with 5-10 young people in two locations. Additional youth will be added to the CTS program in staged intervals to ensure a smooth transition for them, the JR staff, and the community.



Q

AM I ELIGIBLE FOR CTS?

A

If you are serving a **juvenile** sentence, you may be eligible for CTS if:

- You have served 60% of your minimum sentence and no less than 15 weeks, and
- JR has determined that the CTS program is in the best interest of you and the community using a risk assessment tool, and has considered the availability of placement, treatment, and programming. This determination includes consideration of your behavior while in confinement and any disciplinary considerations.

If you are serving an **adult** sentence, you may be eligible for CTS if:

- (1) You have a release date after your 25th birthday, but on or before your 26th birthday, or (2) You have an earned release date on or before your 26th birthday, and you have completed 60% and at least 15 weeks of your term of confinement.
- You have no more than 18 months remaining on your term of confinement.
- JR has determined that the CTS program is in the best interest of you and the community using a risk assessment tool, and has considered the availability of placement, treatment, and programming. This determination includes consideration of your behavior while in confinement and any disciplinary considerations.
- Having DOC Supervision upon completion of their residential obligation does not disqualify them from eligibility for CTS.



Q

WHAT FACTORS MAKE ME INELIGIBLE FOR CTS?

A

You are not eligible for CTS if you:

- Have pending charges or warrants.
- Have a juvenile or adult sex offense and have been classified as a Level III by the Adult End of Sentence Review Committee or the JR Sub-Committee.
- Will be transferred to Department of Corrections (DOC), are currently in DOC's custody, or under DOC's supervision.
- Were adjudicated or convicted of the crime of Murder in the 1st or 2nd degree.
- Meet the definition of Persistent Offender found here: <https://app.leg.wa.gov/RCW/default.aspx?cite=9.94A.030>.
- Require an out-of-state CTS placement.

Q

WILL I BE FINANCIALLY RESPONSIBLE FOR MY PARTICIPATION IN CTS?

A

No. The CTS program is part of JR's continuum of residential care and is provided at no cost to you or your family.



Q

WHAT SHOULD I DO TO BE CONSIDERED FOR THE CTS PROGRAM?

A

If you are eligible and interested in placement in the CTS program, you should be:

- Participating in treatment.
- Attending school or work in the community (if you are at a community facility).
- Displaying a positive attitude and behavior.
- Engaging in recreation and community activities.
- Developing a Future Plan.
- Establishing or working toward safe and stable housing.
- Connecting to family/natural supports in the community.



Q

WHAT HAPPENS WHEN I TRANSFER TO CTS?

A

You will have an orientation phase for the first seven days, during which you will be required to stay at home unless attending school, work, or treatment appointments. This helps you adjust to the new opportunity and get familiar with the structure. You will work with your community counselor to identify a structured daily schedule and ensure the electronic monitoring equipment is functioning well.

As part of the requirements for CTS, you are expected to:

- Enroll in school or secure employment, or both, depending on your Future Plan goals.
- Attend treatment to address any mental health, substance use, or medical concerns.
- Actively participate in community activities and recreation, as approved.
- Maintain frequent and regular contact with your community counselor as directed.
- Develop and follow a structured weekly schedule.
- Wear an electronic monitoring unit (GPS watch or ankle) for the entire time you are participating in CTS.
- Refrain from using drugs or alcohol.
- Refrain from possessing or using a firearm or deadly weapon.
- Stay within geographical boundaries as agreed upon with your community counselor.



Q

HOW IS CTS DIFFERENT THAN BEING AT A COMMUNITY FACILITY?

A

The main difference between a community facility and CTS is that you live at home instead of in a community facility. Additionally, because you are still under sentence and living in the community, you will be on electronic monitoring throughout CTS involvement. Another difference is that you can have your own cell phone, drive a car, and build your credit while on CTS. You have the same access to your community services and supports for 12 and up to 16 hours daily, with approval from your community counselor. You will also work with a community counselor and other staff from the regional office instead of a residential counselor, even though you are still serving your sentence.

**Q**

DO I STILL NEED TO HAVE A FUTURE PLAN?

A

Yes. Developing a thorough Future Plan is part of the eligibility criteria to review preparedness and get accepted into the CTS program. JR staff will work closely with you and your family to identify your Future Plan goals and what supports are needed to help you succeed while participating in CTS.

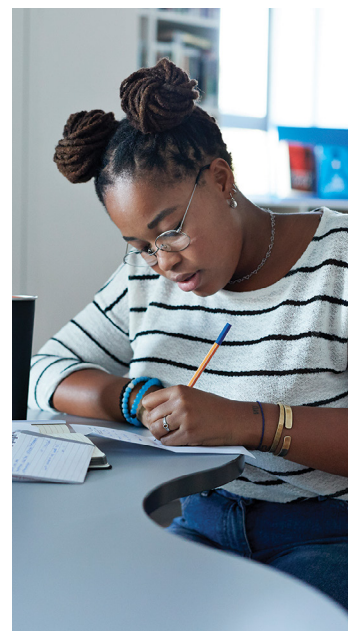
**Q**

WHO WILL HELP ME, AND HOW WILL I PREPARE TO APPLY FOR THE CTS PROGRAM?

A

JR residential and community counselors will work together to help you prepare for the CTS application and review process. This involves a shared responsibility to:

- Meet with you and your family.
- Review the risk assessment and identified needs as part of the IDEA.
- Help you complete the CTS screening form, electronic monitoring agreement, and Future Plan.
- Review the contact expectations and incentive program with you and your family.
- Conduct the home assessment of where you plan to live.
- Ensure legal notices are completed on time.
- Prepare you and your family for the Interim Future Planning Meeting - CTS Review.
- Attend the Interim Future Planning Meeting - CTS Review with you and your family.
- Help you develop a structured weekly schedule to follow if accepted into the CTS program.





Q

WHAT WILL MY COMMUNITY COUNSELOR AND THE REGIONAL STAFF DO TO SUPPORT ME WHEN I AM PARTICIPATING IN CTS?

A

Your community counselor and other JR staff in the regional offices will work closely with you to support your programming, health, wellness, and accountability to the CTS program. JR staff will:

- Stay in close contact during the CTS orientation and throughout the remainder of CTS.
- Help you maintain a structured weekly schedule, including weekends.
- Monitor the CTS electronic monitoring agreement and help troubleshoot equipment or scheduling as needed.
- Assist you with access to school or work activities.
- Conduct community checks with the services and supports you're involved with.
- Help you with treatment appointments.
- Offer support to you and your family.
- Encourage you to participate in recreation and community activities.
- Provide housing essentials.
- Help prepare you for the next step when you are close to completing your residential sentence on CTS.
- Review your Future Plan with you to ensure you are connected to services and programs that address your goals.

Q

CAN I TRANSFER FROM AN INSTITUTION DIRECTLY TO CTS?

A

CTS is a least restrictive placement option as part of the continuum of residential care. CTS will be phased in, drawing eligible candidates from the eight community facilities.

If you are not eligible for community facility placement due to security classification or sentencing restrictions, you may not be eligible for CTS. Your situation may be reviewed individually to determine if or how you may be eligible for community step-down placement at a community facility or CTS.

Q

WILL I BE ON PAROLE WHILE PARTICIPATING IN CTS?

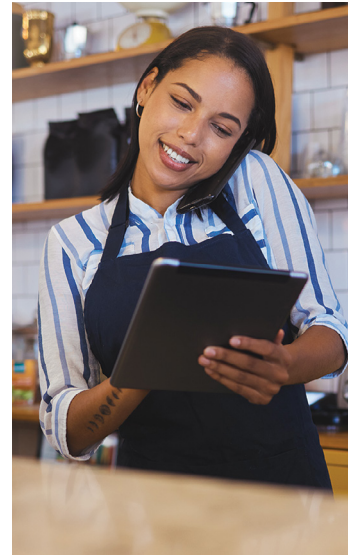
A

No. CTS is a least restrictive placement option as part of your residential sentence. The time spent in CTS does not count toward a parole aftercare obligation. If you are required to serve a parole aftercare obligation, it will begin when you have completed your residential sentence in a JR institution, community facility, or on CTS.

Q WHAT HAPPENS WHEN I AM DONE PARTICIPATING IN CTS?

A Once you complete your residential sentence, you will be done with CTS. The electronic monitoring equipment will be removed. If you have a parole aftercare obligation, it will begin the day you finish CTS. If you have an obligation to Juvenile Court, or Department of Corrections (DOC), you will begin that term the day you finish CTS.

If you don't have any obligations to any court or JR, you are eligible for supports through JR's Community Assisted Reentry (CAR) services for up to 12 months after you finish CTS. CAR services are 100% voluntary. Your community counselor can explain more about what CAR services and supports look like.



Q WILL I HAVE TO REGISTER WHILE PARTICIPATING IN CTS?

A If you have a registerable sex, kidnapping, or firearm offense, you will be required to register with the county you plan to reside in while participating in CTS.

Q WHAT HAPPENS IF I VIOLATE THE CONDITIONS OF CTS?

A If you are on a DOC sentence, participating in CTS, and commit a violation requiring you to be transferred to total confinement after your 25th birthday, you will transfer to the custody and supervision of DOC for the remainder of your sentence. If you are under the age of 25, you will return to a JR institution.

If you are on a JR sentence and violate the conditions of CTS, you will be returned to a JR institution. If the violation includes an escape or other illegal activity, you could also receive a new charge.

Once you transfer back to an institution, you may be eligible for CTS again if you are approved through the same screening and acceptance process.



For more information on CTS, read the *CTS Fact Sheet* at: https://dcyf.wa.gov/sites/default/files/pubs/JR_0038.pdf

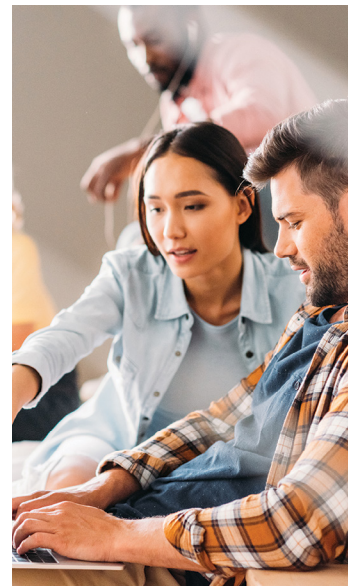
For more information on CAR services, read the *Community Support for All Youth Fact Sheet* at: https://dcyf.wa.gov/sites/default/files/pubs/JR_0043.pdf

Contacts for additional questions:

LAURESA HART, PROGRAM ADMINISTRATOR

(360) 481-9465

Lauresa.Hart@dcyf.wa.gov



DCYF does not discriminate and provides equal access to its programs and services for all persons without regard to race, color, gender, religion, creed, marital status, national origin, sexual orientation, age, veteran's status, or presence of any physical, sensory, or mental disability.

If you would like free copies of this publication in an alternative format or language, please contact DCYF Constituent Relations at 1-800-723-4831 or email communications@dcyf.wa.gov.