

Community Support for All Youth

This document is intended to provide answers to some of the frequently asked questions of **Juvenile Rehabilitation (JR) clients**.



Q

WHAT IS COMMUNITY SUPPORT FOR ALL YOUTH?

A

Community Support for All Youth (CSAY) offers community-based services to you once you release to the community, which includes a community facility. These services will provide support to help with your success as you reenter the community.



Q

WHO WILL BE OFFERED SUPPORT SERVICES?

A

Young people who are not required to complete county probation, the Department of Corrections (DOC) supervision, or moving out of state, will be eligible for CSAY services. Eligible young people may be offered CSAY services through one of the four pathways:

- **Parole Aftercare:** If you are assigned to a mandatory parole obligation.
- **Community Assisted Reentry (CAR):** If you do not have mandatory parole aftercare, county, DOC supervision, or moving to another state.
- **Community Facility:** If you transfer to a community facility.
- **Community Transition Services (CTS):** If you are eligible to serve your remaining sentence in your home community for up to the last 18 months of your sentence.



Washington State Department of
CHILDREN, YOUTH & FAMILIES



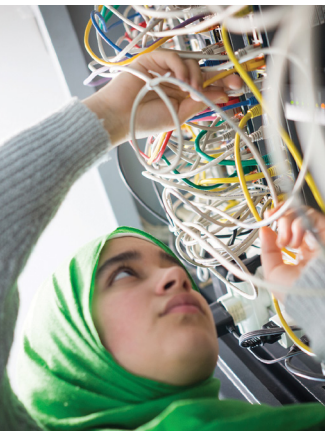
Q WHAT IS PAROLE AFTERCARE

A Parole Aftercare occurs through a relational and strengths-focused model that recognizes the vital role of family and natural supports in helping young people reenter their communities. Parole Aftercare is an important step in successful community reentry for the young people who qualify for this service. For more information on RCW 13.40.210, go to <https://app.leg.wa.gov/RCW/default.aspx?cite=13.40.210>.



Q WHAT IS COMMUNITY ASSISTED REENTRY?

A CAR, formerly known as “No Parole,” is the pathway young people without an obligation to parole aftercare, county, DOC, or moving to another state, can receive critical community-based supports necessary for their successful transition. Participation in CAR services is voluntary and is available for up to 12 months post-release from residential sentence.



Q WHAT IS COMMUNITY FACILITY PLACEMENT?

A JR has eight minimum security community facilities that provide a step-down opportunity for young people to engage in an array of learning, growth, employment, and reentry activities in a community setting, guided by staff support, prior to their release to the community. For more information about these facilities, go to www.dcyf.wa.gov/services/juvenile-rehabilitation/residential-facilities. While in residence at the community facility, young people may be offered the opportunity to take advantage of CSAY services.



Q WHAT ARE COMMUNITY TRANSITION SERVICES?

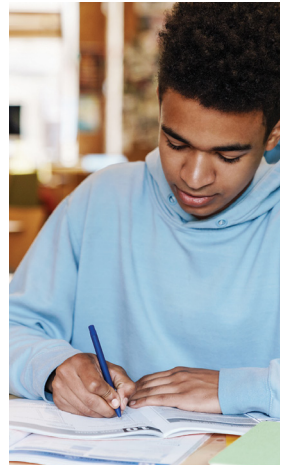
A CTS provides a least restrictive option to residential confinement for eligible JR young people by offering therapeutic supports and connections to services along with electronic monitoring in the community while completing their legal sentence obligation. Young people participating in CTS will be required to participate in community-based services. Read *Community Transition Services (JR_0038)* available online at www.dcyf.wa.gov/publications-library/JR_0038 for more information.

Q

WHAT TYPES OF SERVICES MAY I BE OFFERED?

A

- Housing support
- Behavioral, physical, and mental health
- Independent living skills
- Employment/vocation
- Education
- Mentorship
- Family support
- Wellness/peer support
- Legal advocacy
- Safety/violence prevention
- Community connections
- Other supports that will assist with the goal of a successful reentry and transition back to your community



Q

HOW WILL IT BE DETERMINED WHAT SERVICES JR MAY PROVIDE TO ASSIST WITH MY SPECIFIC NEEDS?

A

Services will be determined by your most recent risk assessment and Future Plan while in residence. Regional staff will use the outcomes of that assessment to seek services to meet your highest needs, with the primary focus being stabilization. Additional needs will be based on time, resources and self reporting if your situation changes.



Q

HOW LONG WILL JR PROVIDE ME WITH SERVICES?

A

- **Parole Aftercare:** You may be offered services during the length of your parole obligations.
- **Community Aftercare Assistance:** You may be offered the opportunity to participate in services for up to 12 months starting the day of your release.
- **Community Facility:** You may be offered services while in residence at a community facility.
- **Community Transition Services:** Services are available for up to 18 months while completing your sentence in the community. Upon completion of CTS, you may be able to receive additional services while on parole or aftercare through CAR.

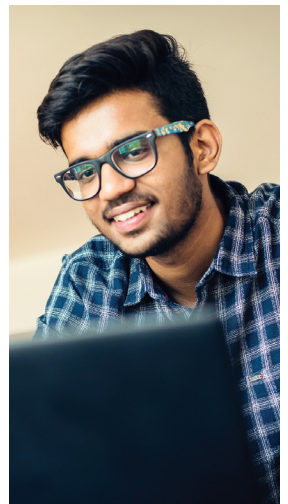


Q

WILL I BE SUPERVISED WHILE RECEIVING SERVICES?

A

Yes, but only if you are receiving services while participating in CTS or on parole aftercare, as you will already be under supervision. If you are receiving services as a CAR participant, you will not be supervised, as your participation is voluntary. All services you receive will be tracked and monitored.



Q WHEN WILL I BE ABLE TO ACCESS THESE SERVICES?

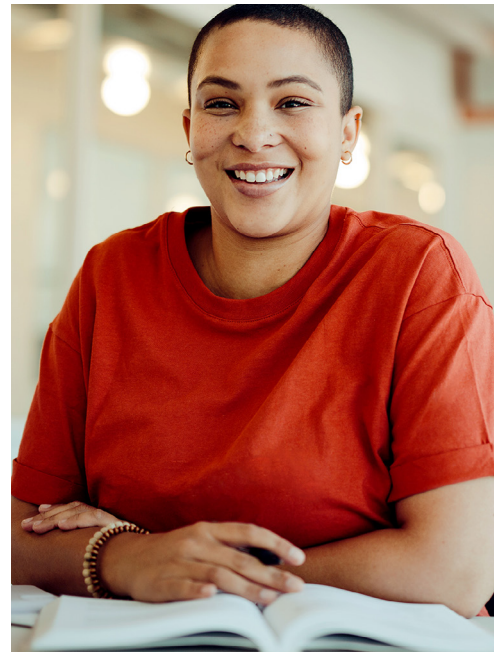
A It is our hope that you will be linked to services prior to your release into the community or if transferring to a community facility. Upon release, you will have full access to your available services in your area.

Q HOW WILL CSAY'S SERVICES ALIGN WITH DCYF'S EQUITY AND SOCIAL JUSTICE FOCUS?

A JR will prioritize identifying and building a capacity of community-based partnerships that reflect the young people being served as it relates to race, ethnicity, sexual orientation, gender identity and expression.

Q WHAT IF I FEEL LIKE I DON'T NEED SERVICES OFFERED FROM CSAY?

- A**
- **Parole Aftercare:** If you have a parole aftercare obligation, your participation in community based services and parole conditions is mandatory.
 - **CAR:** Participation in CAR is voluntary. If you decide you no longer want any offered service, please inform your regional staff.
 - **CF:** You will need to address this concern with your assigned residential counselor in the community facility.
 - **CTS:** If you are participating in CTS, you will be required to participate in community-based services and follow all CTS conditions established by your individual JR Community Counselor.



Additional information about the pathway to accessing services can be found here:

LISA MCALLISTER

Office Chief, Reentry and Transition
(206) 423-3566
lisa.mcallister@dcyf.wa.gov

LAURESA HART

Program Administrator
(360) 481-9465
lauresa.hart@dcyf.wa.gov

JR Community Support for All Youth Fact Sheet (JR_0043): www.dcyf.wa.gov/publications-library/JR_0043

DCYF does not discriminate and provides equal access to its programs and services for all persons without regard to race, color, gender, religion, creed, marital status, national origin, sexual orientation, age, veteran's status, or presence of any physical, sensory, or mental disability.

If you would like free copies of this publication in an alternative format or language, please contact DCYF Constituent Relations at 1-800-723-4831 or email communications@dcyf.wa.gov.

DCYF PUBLICATION JR_0050 (10-2023)