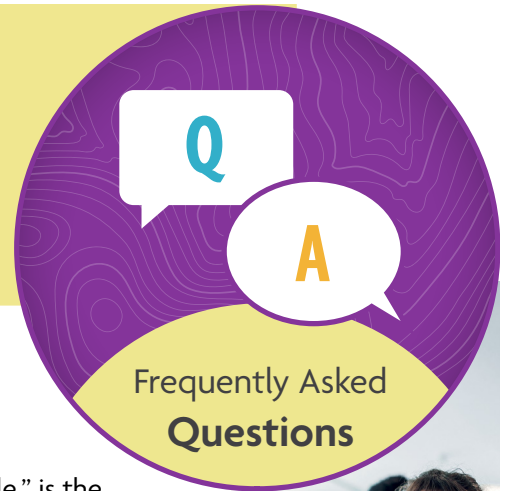


Community Assisted Reentry

This document is intended to provide answers to some of the frequently asked questions of **Juvenile Rehabilitation (JR) clients**.



Q WHAT IS COMMUNITY ASSISTED REENTRY?

A Community Assisted Reentry (CAR), formerly known as “No Parole,” is the pathway young people without an obligation to parole aftercare, county probation, the Department of Corrections (DOC) supervision, or moving out of state, can receive critical community-based supports necessary for their successful transition. Participation in CAR services is voluntary and is available for up to 12 months post-release from residential sentence.



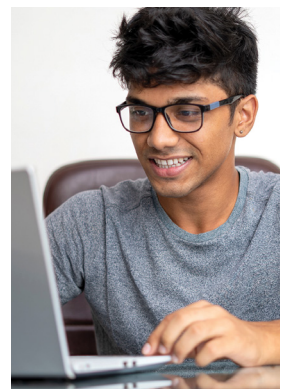
Q WHAT IS COMMUNITY SUPPORT FOR ALL YOUTH?

A Community Support for All Youth (CSAY) is the overarching framework and philosophy that all young people may be offered support in the community by the JR regions. CSAY addresses the unique needs of young people by utilizing community-based services to assist with the successful transition from their residential stay.



Q WHAT TYPES OF SERVICES MAY I BE OFFERED?

- A
- Housing support
 - Behavioral, physical, and mental health
 - Independent living skills
 - Employment/vocation
 - Education
 - Mentorship
 - Family support
 - Wellness/peer support
 - Legal advocacy
 - Safety/violence prevention
 - Community connections
 - Other supports that will assist with the goal of a successful reentry and transition back to their communities.





Q

HOW WILL IT BE DETERMINED WHAT SERVICES JR MAY PROVIDE TO ASSIST WITH MY SPECIFIC NEEDS?

A

Services will be determined by your most recent risk assessment and Future Plan while in residence. Regional staff will use the outcomes of that assessment to seek services to meet your highest needs, with the primary focus being stabilization. Additional needs will be based on time, resources, and self reporting if your situation changes.

Q

WILL ANYONE FROM MY REGION CONTACT ME WHILE I'M SERVING MY SENTENCE?

A

You can expect someone from your home region to contact you during your residential stay. At that time, you will learn more about CAR services and available resources to meet your individual needs.

Q

HOW DO I KNOW WHICH REGION TO CONTACT IF I NEED SUPPORT?

A

Washington is divided into six separate regions. You will need to work with your case manager to determine which region would be supporting you if it is unknown. (See contact chart on page 4)

Q

WHEN WILL I BE ABLE TO ACCESS THESE COMMUNITY-BASED SERVICES?

A

It is our hope that you may be offered and linked to services prior to your release to the community. Upon release you will have full access to your available services.



Q HOW LONG WILL JR PROVIDE ME WITH COMMUNITY-BASED SERVICES?

A You will have the opportunity to participate in services for up to 12 months starting the day of your release.

Q CAN I ACCESS THESE SERVICES AT ANY TIME DURING THE 12 MONTHS AFTER I HAVE BEEN RELEASED FROM JR?

A Yes. For young people assigned to CAR, services may be available during the first 12 months after your release.

Q WHAT HAPPENS IF I DECLINE SERVICES OR DECIDE I NO LONGER WANT TO PARTICIPATE IN THE SERVICES I WAS REFERRED TO?

A CAR participation is voluntary. You are not required to participate or remain in any services. If you decide you no longer want to participate, please inform regional staff. Should you later decide you want services after declining or discontinuing, you may reengage in services, as long as it's within 12 months of your release date.

Q WHAT HAPPENS IF I MOVE OUT OF STATE UPON MY RELEASE OR DURING THE 12 MONTHS I'M ELIGIBLE FOR CAR?

A CAR services are only available for you within the state of Washington. If you return to the state within the 12 months after your release and feel you need support, CAR services can still be accessible. You will need to contact your regional office and notify them of your desire to reengage in services.

Q HOW WILL CSAY'S COMMUNITY-BASED SERVICES ALIGN WITH DCYF'S EQUITY AND SOCIAL JUSTICE FOCUS?

A JR will prioritize identifying and building a capacity of community-based partnerships that reflect the young people being served as it relates to race, ethnicity, sexual orientation, gender identity and expression.





WHERE CAN I FIND MORE INFORMATION ABOUT COMMUNITY SUPPORT FOR ALL YOUTH SERVICES?



Download *JR Community Support for All Youth Fact Sheet* (JR_0043) available online at www.dcyf.wa.gov/publications-library/JR_0043.

LISA MCALLISTER

Office Chief, Reentry and Transition
 (206) 423-3566
lisa.mcallister@dcyf.wa.gov

LAURESA HART

Program Administrator
 (360) 481-9465
lauresa.hart@dcyf.wa.gov

REGIONS	COUNTIES	REGIONAL OFFICE	PHONE
1	Adams, Asotin, Chelan, Douglas, Ferry, Garfield, Grant, Lincoln, Okanogan, Pend Oreille, Spokane, Stevens, and Whitman	SPOKANE	(509) 505-5470
2	Benton, Columbia, Franklin, Kittitas, Klickitat, Walla Walla, and Yakima	YAKIMA	(509) 225-4460
3	Island, Point Roberts, San Juan, Skagit, Snohomish, and Whatcom	EVERETT	(425) 257-1620
4	King County	SEATTLE	(206) 639-6000
5	Clallam, Jefferson, Kitsap, and Pierce	TACOMA	(253) 476-7100
6	Thurston, Mason, Grays Harbor, Pacific, Wahkiakum, Cowlitz, Lewis, Clark, and Skamania	LACEY	(360) 407-3200

DCYF does not discriminate and provides equal access to its programs and services for all persons without regard to race, color, gender, religion, creed, marital status, national origin, sexual orientation, age, veteran's status, or presence of any physical, sensory, or mental disability.

If you would like free copies of this publication in an alternative format or language, please contact DCYF Constituent Relations at 1-800-723-4831 or email communications@dcyf.wa.gov.