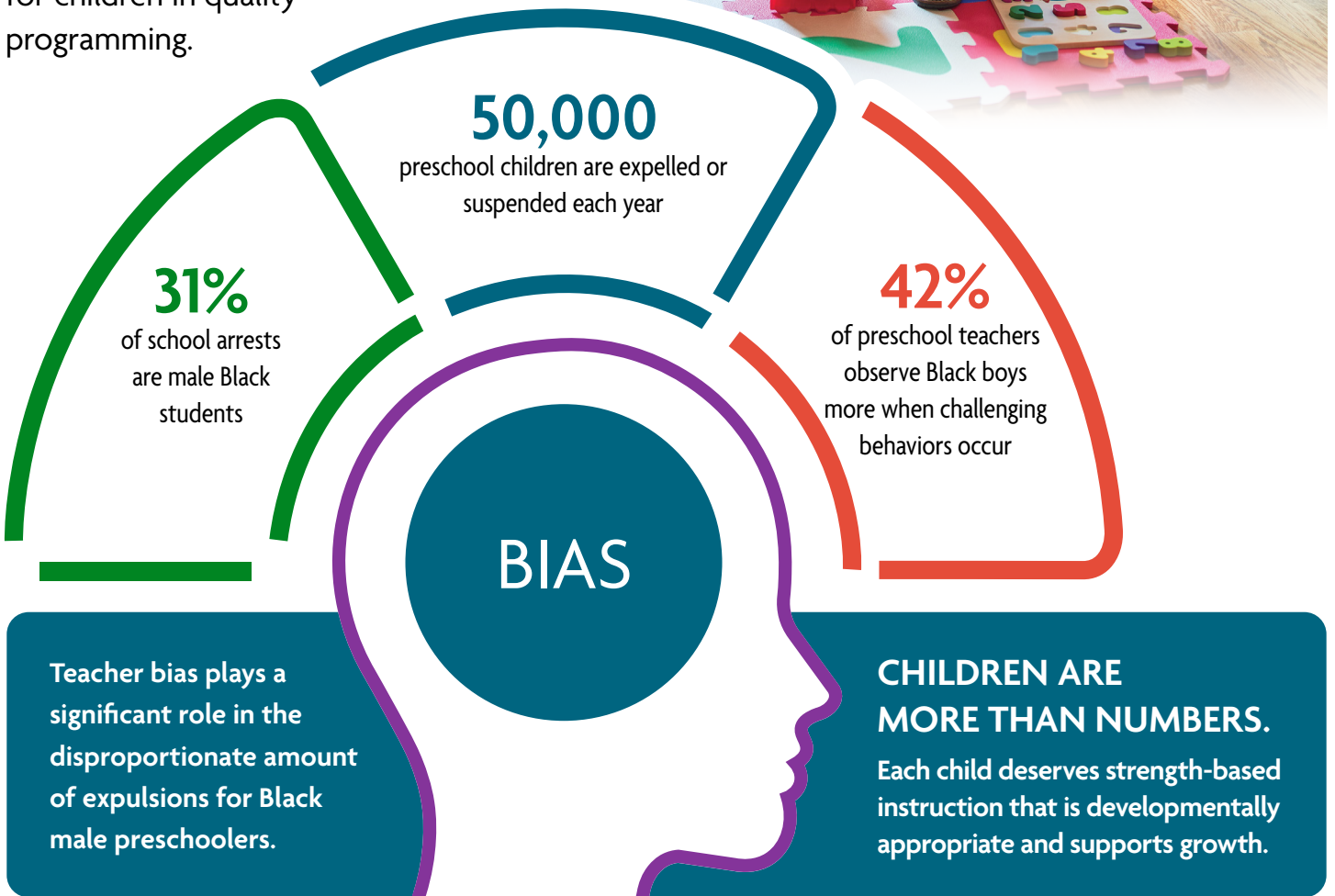


ECEAP No Expulsion Information Sheet

Our Why

The Early Childhood Education and Assistance Program (ECEAP) is committed to leading with racial equity and prohibiting the historical outcomes for children of color. Across the nation, children of color are disproportionately expelled and restrained each year. By implementing guidance for no expulsion, this will ensure continuous enrollment for children in quality programming.



Washington State Department of
CHILDREN, YOUTH & FAMILIES



ECEAP's no expulsion standard aims to ensure children and families are provided with resources and supports to meet the individual need. The standard guides contractors in tailoring resources to needs, developing support plans with families, and implementing supports with fidelity. At no point should a parent have to choose between services or programming for their student. Contractors are required to seek additional support through their CQI Specialist.

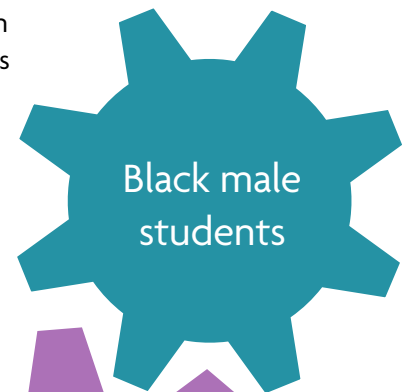
Steps to supporting no expulsion in programs include, but are not limited to:

- Meetings with families
- Developing and implementing behavior support plans
- Consulting with an Infant and Early Childhood Mental Health Consultant
- Outlining temporary services through an alternative attendance plan

Resources

- Haring Center
<https://haringcenter.org>
- Pyramid Model-NCPMI
<https://challengingbehavior.cbcs.usf.edu/index.html>
- U.S. Department of Education
- Civil Rights Data Collection
<https://ocrdata.ed.gov/>
- Bias Isn't Just A Police Problem, It's A Preschool Problem (Video): <https://youtu.be/ucEAcIMkS0c>

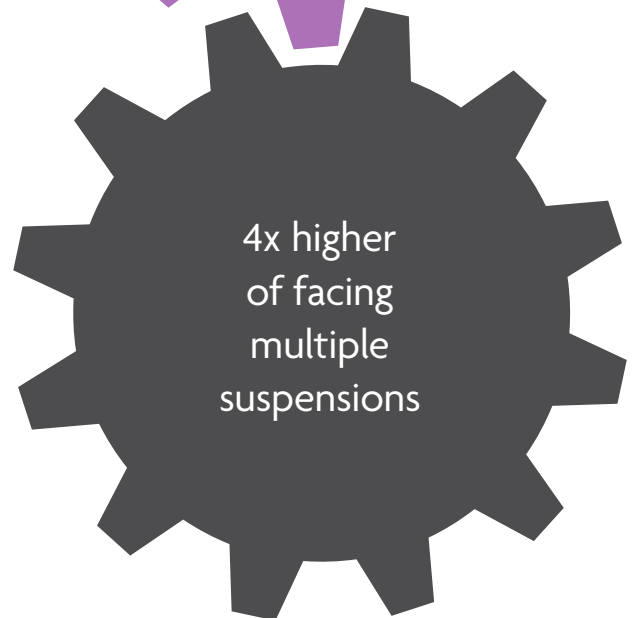
DCYF ECEAP requires contractors to document efforts made to support the child and family. Contractors must seek support from their CQI Specialist and obtain approval before implementing any Alternative Attendance Plan.



Black male students



3x higher of being expelled



4x higher of facing multiple suspensions