



Standards Alignment

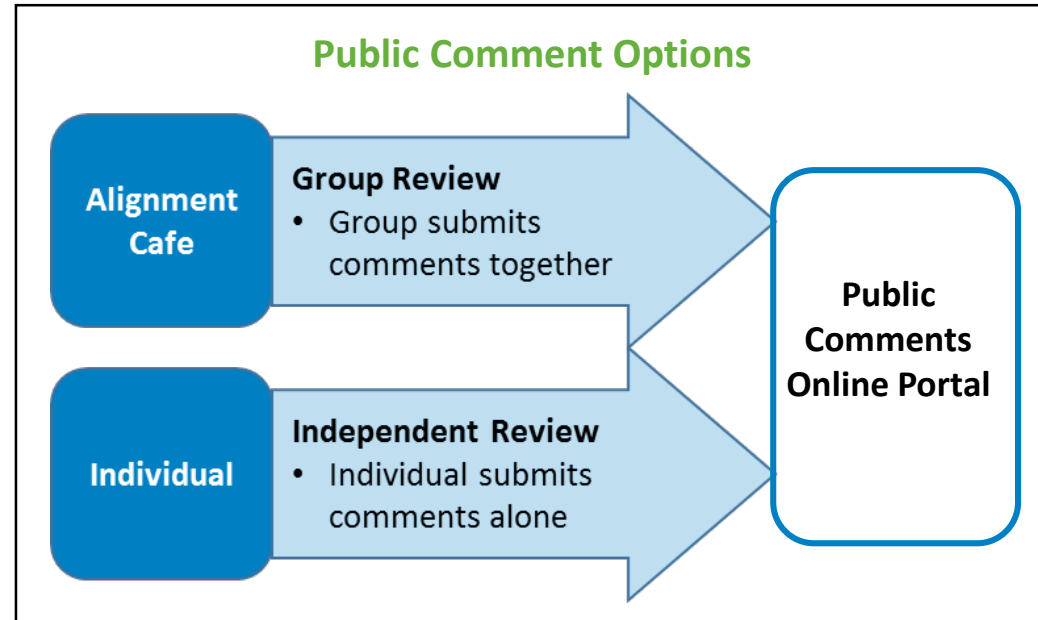
Negotiating and Commenting on the Proposed Licensing Rules

DEL has drafted an updated, aligned, and weighted set of rules for Family Home and Center child care facilities. The next step in the process: **gather public comments and negotiate the rules with people and organizations affected by them.**

May 19, 2017: DEL's online public comment portal will be open to receive comments about the proposed rules and the proposed rule's weights. Find the link to the portal and the complete set of the rules for review at:

www.del.wa.gov/government/standards-alignment

Alignment Community Café - a local group of providers or members of the public, self-organized by stakeholders and supported by DEL to review the proposed rules and solicit group comments.



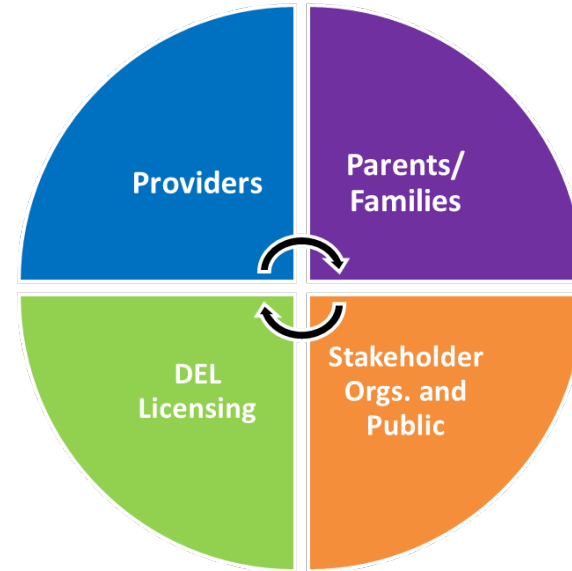
DEL is integrating its Negotiated Rulemaking and Public Comment processes. Once these are complete the licensing rules will be filed officially and DEL will begin communications and training activities for providers and licensors.



Negotiated Rulemaking

DEL is required by statute to organize a public comments process, as well as negotiate rules with the Family Home Providers' union on behalf of represented family child care licensees. Also included in that negotiation are all other "affected parties".

DEL's goal is to ensure adequate, equitable, and diverse representation in the negotiations.



Family Home providers will be coordinated jointly by SEIU.

Partners, e.g. Thrive by Five, CCA and WSA will provide support engaging all family home providers.

Center providers will be coordinated by Thrive Washington.

Stakeholders, e.g. CCA, Early Learning Regional Coalitions, local Center Directors' groups, etc. will provide support engaging all types of center providers.

Want to find out how you can learn more or be involved?

Email communications@del.wa.gov or visit www.del.wa.gov/government/standards-alignment

DEL team will be organized by the department licensing division engaging state-wide licensing staff.

Includes licensors, supervisors, regional administrators, health specialists, licensing analysts, and technical assistance specialists.

Families/Parents & Stakeholders will be coordinated by Child Care Aware.

Stakeholders, e.g. DEL Parent Advisory Group (PAG), WSA Parents Ambassadors team, Thrive, etc. will provide support.

ECEAP/HS will be coordinated by WSA.

Stakeholders, e.g. CCA, Thrive, Early Learning Regional Coalitions, local Center Directors' groups, etc. will provide support engaging all types of ECEAP/HS providers.