



# ESIT PRESENTATION

Paula Moore

Caseload Forecast Council

2.16.2022



# Forecast for ESIT for FY 22 and FY 23

FY 2022:

9,591

FY 2023:

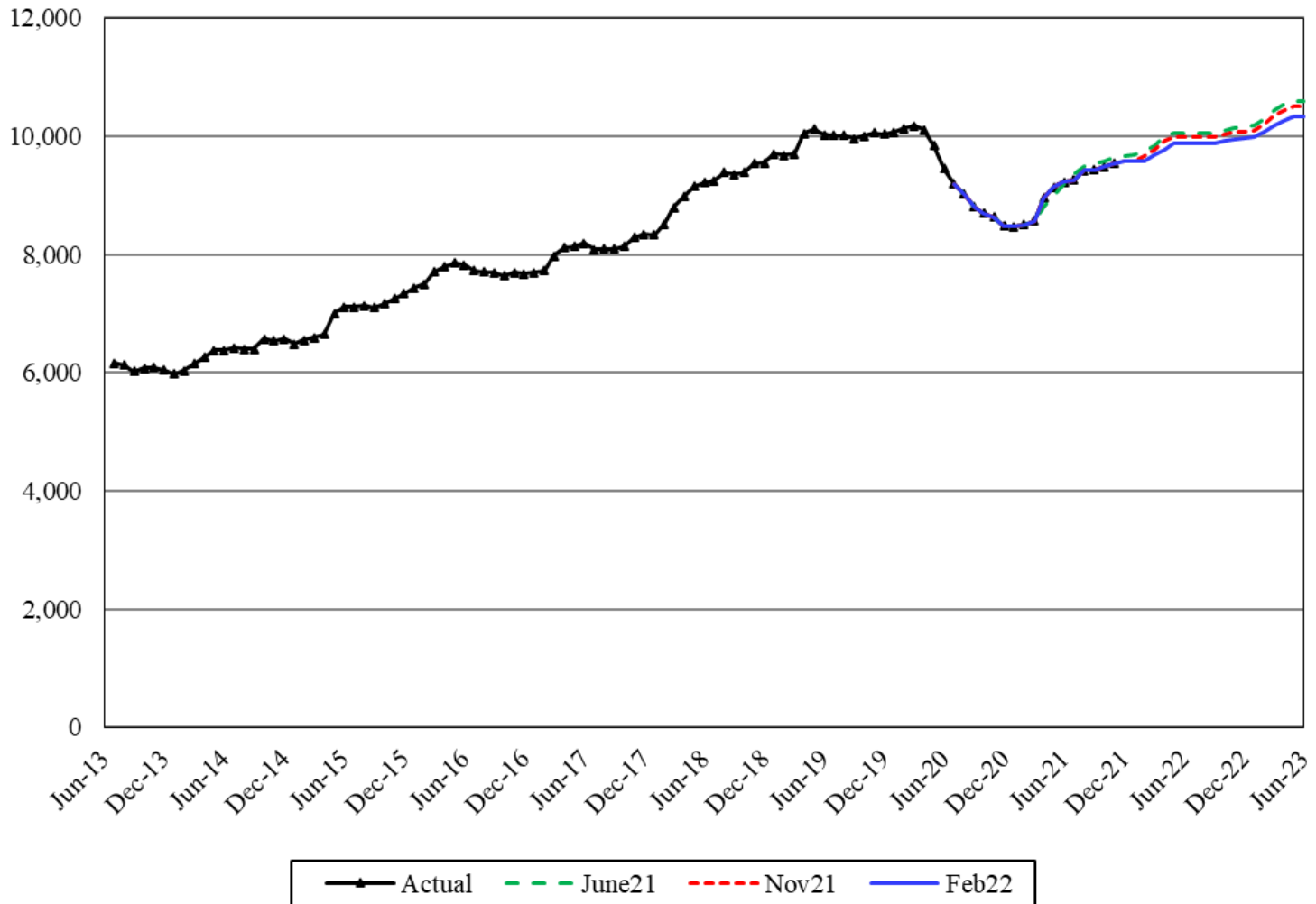
10,056

Feb vs Nov:

FY 2022: -0.5%

FY 2023: -1.3%

**21-23 Bi: -0.9%**

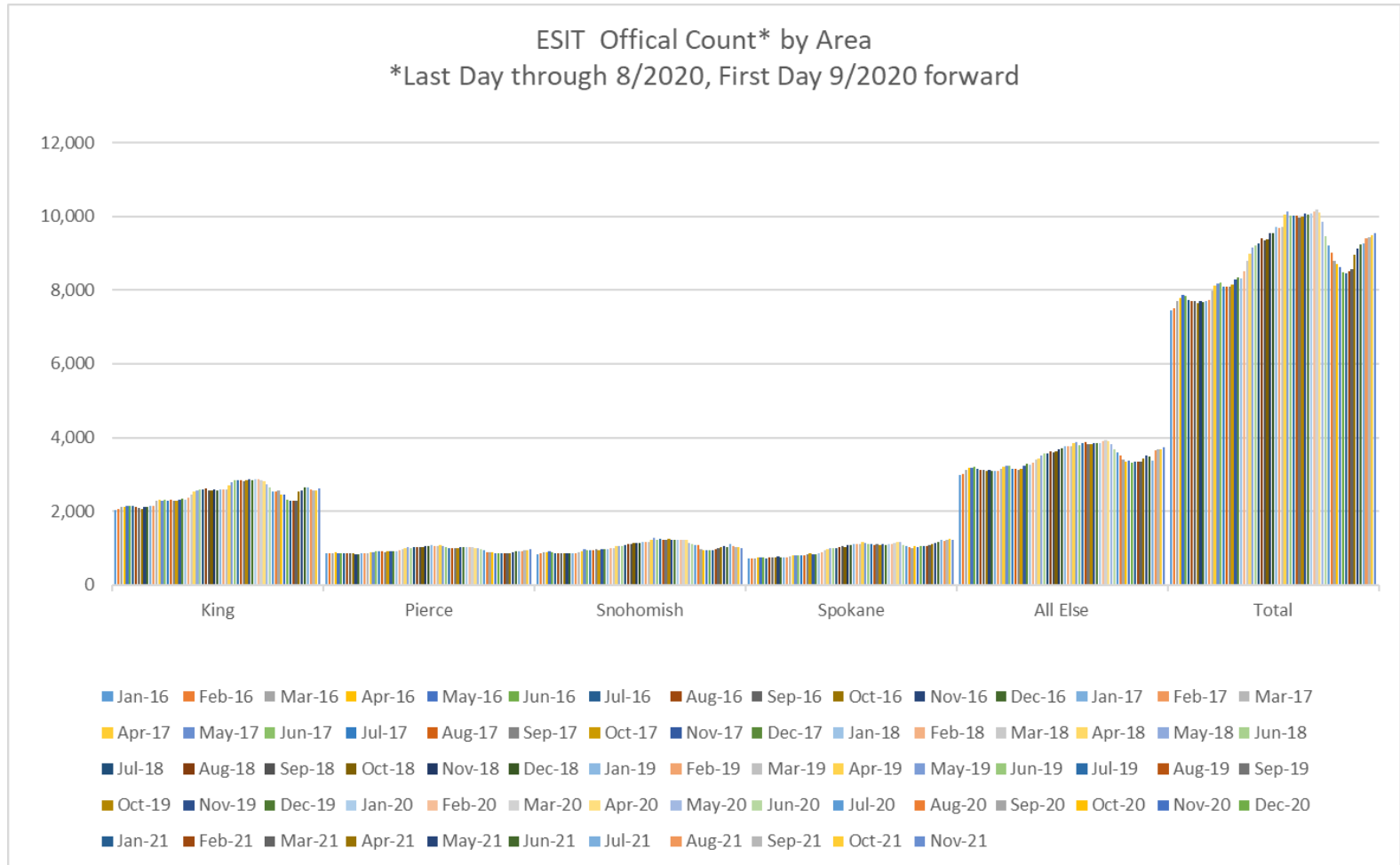




# Official Counts Around the State

*Around the state, ESIT caseload is recovering, though different regional patterns.*

*Growth continues to be in Spokane and outside of Puget Sound.*

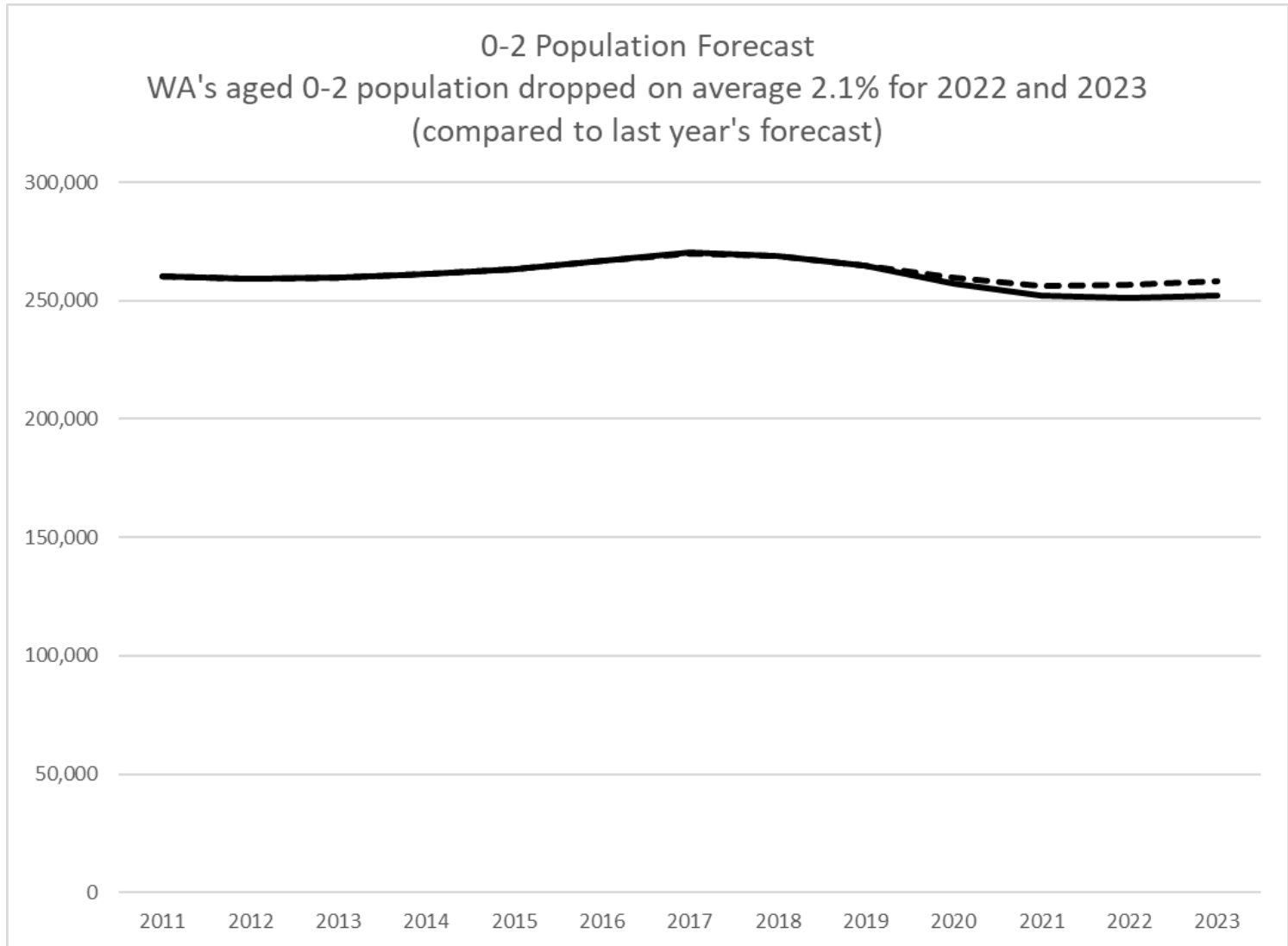




# OFM Revised Population for Age 0-2

*As expected, OFM reduced its population forecast for the overall state population for those aged 0-2.*

*The forecast was reduced about 2%.*





# COVID-19 Uncertainty Continues

- Vaccine access uncertain for under 5. Pfizer still in testing-now testing out a 3<sup>rd</sup> dose. However, Moderna may also have one to submit to FDA.  
<https://www.wsaw.com/2021/12/30/moderna-vaccine-trial-young-children-nears-finish-line/>
- <https://www.washingtonpost.com/health/2021/12/17/pfizer-vaccine-young-children-third-shot/>
- Omicron is fast moving and creating uncertainty. May have caused service disruptions at clinic level, impacting referrals and evaluations.
- ESIT families continue to balance risks on individual level
- Vaccines for children age 5-11 approved.
- School is open with the revised CDC 3ft guidelines, providing more flexibility for ESIT families with school-aged children to participate in visits.
- School/daycare quarantines and outbreaks vary by region.
- Preventive tools: quality masks, rapid tests, vaccines age 5+.
- ESIT Providers able to access boosters.
- ESIT Providers offering array of services
- Some ESIT Providers temporarily returned to virtual services.