

Child Care Health Consultation

Child Care Health Consultation (CCHC) System and Services

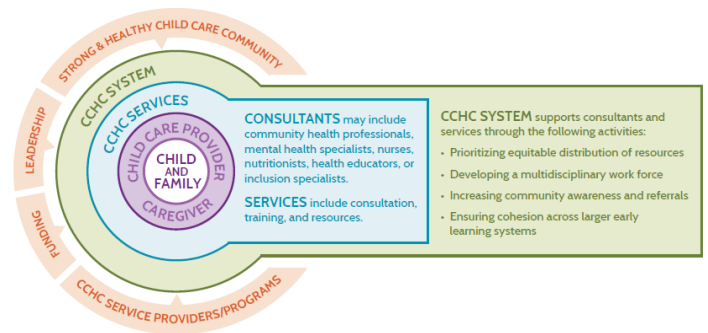
What is Child Care Health Consultation?

- Child Care Health Consultation (CCHC), formerly called infant nurse consultation, is required by Washington Administrative Code (WAC) 110-300-0275.
- CCHC is a collaborative partnership between a trusted consultant and children, families, and providers to promote optimal physical and emotional health, safety and development of children in child care.
- CCHCs work with a healing-centered, trauma-informed approach to support providers to identify, prevent, and reduce risks in child care settings.
- CCHC increases child care provider and caregiver confidence and abilities to improve health outcomes for children from traditionally marginalized backgrounds and reduces suspensions and expulsions that disproportionately affect young children of color and children with disabilities.

What Services Does a CCHC Provide?

CCHCs use their health expertise and knowledge of best practices to provide advice and technical assistance in many areas:

- Help programs understand children's healthy growth and development, and how to address health conditions.
- Write or review policies and procedures to reduce the spread of illness.
- Observe practices and help programs prevent injuries and illnesses, including identifying hazards in the facility.
- Provide training for staff and families and facilitate referrals to community resources.
- Assist programs with quality improvement strategies, including working with Early Achievers coaches as needed.
- Help to prevent the expulsion of children due to challenging behaviors, special health care needs, and developmental disabilities.
- Provide advice on nutrition and physical activity.
- Assist with the tracking and monitoring immunization compliance.



From Kindering and Best Starts for Kids, King County, 2021

What to Expect with a CCHC?

- Monthly onsite nurse visits in infant rooms, as well as consultation by phone or email, as needed.
- A CCHC does not typically offer direct nursing services to families but rather shares health and developmental expertise.
- Assistance for families in care coordination with their medical home and other health and developmental specialists or assist the child care provider in addressing developmental concerns with families.
- Collaboration with an interdisciplinary team of early childhood consultants, such as early childhood education, mental health, nutrition consultants and Early Achievers coaches.
- Specific health and safety consultation needs for an individual facility will depend on the characteristics of the facility, the experience of the staff, and the group of children in attendance.

Website for resources and reporting:

<https://www.dcyf.wa.gov/services/early-learning-providers/cchc>

For connection to a CCHC or to register a new CCHC:

dcyf.childcarehealthconsultation@dcyf.wa.gov
360-522-6256



Washington State Department of
CHILDREN, YOUTH & FAMILIES

Original Date: September 13, 2024 | Revised Date: September 23, 2024

Office of Partnership, Prevention, and Services | Approved for distribution by Jennifer Helseth, Health System Analyst